



HHSA Sailing Instructions 2022

HERRINGTON HARBOUR SAILING ASSOCIATION



**HHSA
SAILING INSTRUCTIONS
2022**



Page intentionally left blank



[Grab your reader's attention with a great quote from the document or use this space to emphasize a key point. To place this text box anywhere on the page, just drag it.]

Table of Contents

Introduction	1
Designating Courses to be Sailed	1
Class Definitions	1
Starting Sequence	2
Example Start Sequence	3
HHSA Wednesday Night Races	6
Race to Miles River	7
HHSA Women's Regatta	8
HHSA Sharps Island Race	11
HHSA Great Bay Race	12
HHSA Shorthanded Race	13
HHSA Poplar Island Race	14
HHSA West River Race	15
HHSA Herring Bay Cup	23
HHSA Regatta	27



HHSA Autumn Classic Race	28
HHSA Frostbite Series (6 multi-race days)	29
Appendix A - Special Instructions for Drop-In Racers	31
Appendix B - Special Instructions for a Rabbit Start	34



Introduction

HHSA racing events are governed by the “rules” as defined in the Racing Rules of Sailing (RRS) except as any of these are altered by these Sailing Instructions and any amendments or the HHSA Racing Rules.

The current HHSA Course Book and HHSA Racing Rules are separate documents. However, they are part of the Sailing Instructions and any reference to the Sailing Instructions includes the Course Book and Racing Rules by reference.

Class Definitions

Unless otherwise noted in the individual race sailing instructions below, there will be three classes, each with a separate start. The classes are:

Spinnaker	Boats racing with a spinnaker
Non-Spin - Racing	Boats racing non-spinnaker with a sail area to displacement ratio greater than or equal to 21
Non Spin - Cruising	Boats racing non-spinnaker with a sail area to displacement ratio less than 21

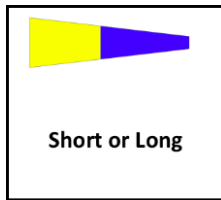
Sail Area to Displacement (SA/D) is defined is based on the largest headsail declared on the boat’s PHRF rating certificate.

A boat in the Non-Spin Cruising class may request to be placed in the Non-Spin Racing class. Other class changes must be approved by Rear Commodore-Racing.

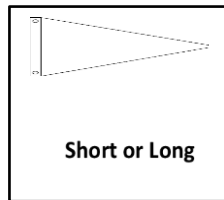
Designating Courses to be Sailed

Class course boards hung on the non-starting side of the Committee Boat will indicate which option of the course is to be sailed – either Short or Long. Unless specified differently in the Sailing Instructions, there will be three (3) classes: Spinnaker, Non-Spin-Racing and Non-Spin-Cruising. There will be three (3) starts. The Non-Spin classes will be split based on SA/D ratios.

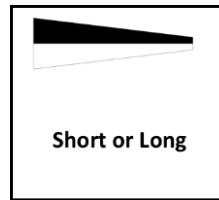
- Numeral Pennant 5 will indicate the Non-Spinnaker Racing course
- White Pennant will indicate the Non-Spinnaker Cruising Course
- Numeral Pennant 6 will indicate the Spinnaker Course



Non-Spin Racing
Board

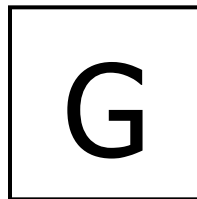


Non-Spin Cruising
Board



Spinnaker
Class Board

A separate board with either a single letter A through Z or numeral 1 through 4 will indicate which course from the HHSA Course Book will be sailed.



Example Course Board for Course “G”

Starting Sequence

HHSA uses the starting sequence as specified in Racing Rules of Sailing. Additionally, the club requires the use of the ‘L’ flag as defined in the back cover of the RRS to mean “come within hail or follow me” while the committee boat is going on station. The ‘L’ flag will be lowered exactly one minute before the next flag is to be raised accompanied by repetitive horn blasts. Together, these signals will indicate to competitors that the starting sequence is about to commence.

If the start of the race is delayed the AP flag will be displayed with two (2) sounds, and lowered with one (1) sound one minute before the new starting sequence begins.



Example Start Sequence

The following chart shows an example of a starting sequence with spinnaker boats starting first, followed by non-spinnaker classes.

Multiple-Start Sequence

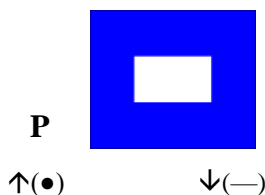
Signal	Flag & Sound	VHF (recommended)	Minutes before start signal	Example time for Wednesday races
Follow-me/ Check-in	'L' at full hoist;	"Welcome, racers"		
	'L' lowered, multiple short horn blasts		6	1829
Warning	Spin Class Flag Raised; 1 horn blast	"5, 4, 3, 2, "	5	1830
Preparatory	'P' raised; 1 horn blast	"Spin Prep"	4	1831
One-minute	'P' lowered; 1 long horn blast	"5, 4, 3, 2, "	1	1834
Starting	Spin Class Flag lowered; Non-Spin Racing Class Flag Raised; 1 sound (gun or horn)	"5, 4, 3, 2, all clear"	0	1835
Preparatory	'P' raised; 1 horn blast	"Non-Spin Racing prep"	4	1836
One-Minute	'P' lowered; 1 long horn blast	"5, 4, 3, 2, "	1	1839
Starting	Non-Spin Racing Class Flag lowered; Non-Spin Cruising Class Flag raised 1 sound (gun or horn)	"5, 4, 3, 2, all clear"	0	1840
Preparatory	'P' raised; 1 horn blast	"Non-Spin Cruising prep"	4	1841
One-Minute	'P' lowered; 1 long horn blast	"5, 4, 3, 2, "	1	1844
Starting	Non-Spin Cruising Class Flag lowered 1 sound (gun or horn)	"5, 4, 3, 2, all clear"	0	1845



Common Signals

The meanings of visual and sound signals commonly used at HHSA are stated below. An arrow pointing up or down (↑ ↓) means that a visual signal is displayed or removed. A dot (●) means a sound; five dashes (-----) mean repetitive sounds; a long dash (—) means a long sound; empty parentheses () indicate no sound. When a visual signal is displayed over a class flag, the signal only applies to that class.

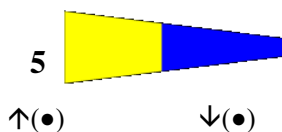
Starting Signals



↑(●)

↓(—)

Preparatory: Up - Four minutes until the class start. All boats in the class are considered racing. Down one minute before class start.



↑(●)

↓(●)

Non-Spinnaker Racing Class Warning: Up at the warning signal for the non-spinnaker class. Down with gun or horn for the start.



↑(●)

↓(●)

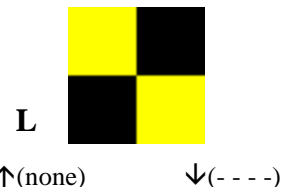
Non-Spinnaker Cruising Class Warning: Up at warning signal. Down with gun or horn for the start.



↑(●)

↓(●)

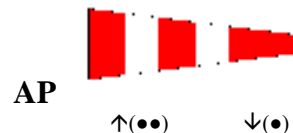
Spinnaker Class Warning: Up at warning signal. Down with gun or horn for the start.



↑(none)

↓(-----)

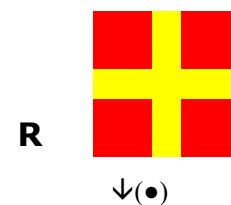
L Flag: Afloat: Come within hail or follow this boat. Down with multiple sounds one minute before new start sequence.



↑(●●)

↓(●)

Answering Pennant: Races not started are postponed. Start sequence to commence one minute after removal.

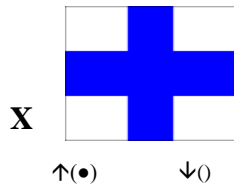


↓(●)

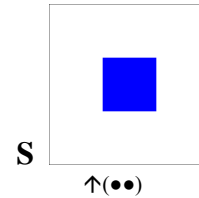
R Flag: When flown from the Committee Boat indicates that another race is planned. Down one minute before warning signal of next race.



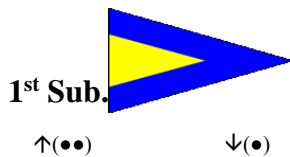
Other Signals



Individual Recall: One or more boats were OCS. The flag is displayed until all boats have properly started or at the succeeding start's one-minute signal, whichever is first.



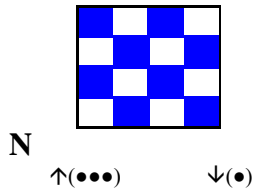
S Flag: Displayed with two sounds to indicate that course has been shortened.



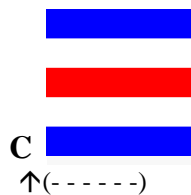
General Recall: The entire class will be restarted. The warning signal will be one-minute after the flag is removed.



Y Flag: When displayed from the committee boat, wear a personal floatation device.



N Flag: Races started are abandoned. Return to starting area. Start sequence will commence one minute after removal, unless all racing is subsequently abandoned.



C Flag: Displayed with repetitive sounds to indicate a change of course.



HHSA Wednesday Night Races

Dates	Practice Race Wed, April 27 Series 1 May 4 May 11, May 18, May 25, June 1, June 8 Series 2 Jun 15, Jun 22, Jun 29, Jul 6, Jul 13, Jul 20 Series 3..... Jul 27, Aug 3, Aug 10, Aug 17, Aug 24, Aug 31			
Approx. Times				
	<i>Signal</i>	<i>Spinnaker</i>	<i>Non-Spinnaker Racing</i>	<i>Non-Spinnaker Cruising</i>
	Warning	1830	1835	1840
	Preparatory	1831	1836	1841
	One-minute	1834	1839	1844
	Start	1835	1840	1845
Skippers’ Meeting	None Skippers should register for this race at HHSA.org to assist the Race Committee with planning the start.			
Rendezvous	Race Committee, within 2 miles of HHSA A at approx. 1750 hours.			
Start	Between Committee Boat and drop mark or other nearby mark			
Finish	Between Committee Boat and HHSA A			
Course	Designated by a sign boards on Committee Boat. The Race Committee must select a course from the HHSA Course Book. Different versions of the course (Short or Long) may be set for the Spinnaker, Non-Spinnaker Racing and Non-Spinnaker Cruising Classes.			
Time Qualifications	In order for the race to qualify, the lead boat in each class must finish within 2 hours after the starting signal, and each boat must finish before 2135 or be scored as DNF. This modifies RRS 35. The Race Committee will sound 3 blasts at 2135 hours to signal DNF for boats still on the course and announce on VHF Channel 68.			
Protests	The protest time limit is 2 hours after racing has concluded for the day.			
Awards	Wednesday races of Series 1, 2 and 3 count towards High Point and Commodore’s Cup. Awards given out per Series. See HHSA Racing Rules for details.			
Social	An informal gathering at local restaurant or location announced by the RC.			



Race to Miles River

Date	Saturday, May 14, 2022																				
Approx. Times	<p>The table shows the approximate times for the race.</p> <table><tr><th><i>Signal</i></th><th><i>Non Spinnaker Cruising</i></th><th><i>Non-Spinnaker Racing</i></th><th><i>Spinnaker</i></th></tr><tr><td>Warning</td><td>1200</td><td>1220</td><td>1240</td></tr><tr><td>Preparatory</td><td>1201</td><td>1221</td><td>1241</td></tr><tr><td>One-minute</td><td>1204</td><td>1224</td><td>1244</td></tr><tr><td>Start</td><td>1205</td><td>1225</td><td>1245</td></tr></table>	<i>Signal</i>	<i>Non Spinnaker Cruising</i>	<i>Non-Spinnaker Racing</i>	<i>Spinnaker</i>	Warning	1200	1220	1240	Preparatory	1201	1221	1241	One-minute	1204	1224	1244	Start	1205	1225	1245
<i>Signal</i>	<i>Non Spinnaker Cruising</i>	<i>Non-Spinnaker Racing</i>	<i>Spinnaker</i>																		
Warning	1200	1220	1240																		
Preparatory	1201	1221	1241																		
One-minute	1204	1224	1244																		
Start	1205	1225	1245																		
Skippers' Meeting	Skippers Meeting on Zoom, May 19 at 1900. Details available by registering on the Events Calendar at www.hhsa.org .																				
Rendezvous	Race Committee at 83A at approx. 1100 hours.																				
Start	Between Committee Boat and 83A																				
Finish	Between Committee Boat and Miles River R8N																				
Course	START→R2A(P)→ R4(S) →RN6(S) →R8N(P)																				
Time Qualifications	In order for the race to qualify, the lead boat in each class must finish within six hours of the class start. The Race Committee will stay on station until at least 90 minutes after the last class qualifies. Boats finishing after the Race Committee has left station shall take their own finish times in accordance with HHSA Rules 7.C & 8.B.																				
Protests	The protest time limit is 2 hours after racing has concluded for the day.																				
Awards	Counts towards High Point and Commodore's Cup. See HHSA Racing Rules for details.																				
Social	<p>Awards and social will be at the Miles River Yacht Club. MYRC plans to have D dock available for HHSA racers to tie up and raft. Isabelle's dock bar will be available for food and beverages.</p> <p>Awards presentation planned for 1800.</p> <p>HHSA boats may be able to stay overnight. There will be a dockage fee.</p>																				
Other	VHF Channel 68 will be monitored.																				



HHSA Women's Regatta

Date	Saturday, June 11, 2022
Registration	Register via event registration page on www.hhsa.org → Women's Sailing → Women's Regatta 2022 → Registration → Click Here
Contact	Jayne Durden: Communications@hhsa.org
Rules	The regatta will be governed by the rules as defined in The Racing Rules of Sailing (RRS), as amended by the Sailing Instructions.
Eligibility:	<p>The regatta is open to boats with crews made up solely of women. Boats are encouraged to have a current PHRF certificate. HHSA, the Organizing Authority, may assign a courtesy rating to boats without a certificate.</p> <p>Intended Classes are:</p> <ul style="list-style-type: none">• Spinnaker• Non-Spin Racing (boats with an upwind Sail Area-to-Displacement ratio equal to or greater than 21)• Non-Spin Cruising (boats with an upwind Sail Area-to-Displacement ratio less than 21)
Skippers' Meeting	Skippers meeting will be held at 1900 (7:00) PM, on Thursday, June 9, via Zoom. Skippers should register by going to HHSA.org (Women's Sailing) and register for the race and receive the Zoom login information.
Rendezvous	<p>An informal "meet and greet" with coffee and donuts will be held between 0830 and 0930 at the Herrington Harbour North patio (near C Dock, next to the marina office). Skippers, crews, and guests are welcome.</p> <p>Rendezvous with the Race Committee boat in the vicinity of HHSA A at approx. 1000 hours. Racing will take place on Herring Bay, MD. Race Committee will display Code Flag Lima and move to a suitable nearby starting area.</p> <p>Boats should check in by sailing by the starboard side of the Race Committee boat providing boat name and class.</p>
Start	<p>RRS 26 (Starting Races) for the first race:</p> <p>Starting line is between the orange flag on Race Committee Signal Boat (or other designated by the Race Committee) and a nearby inflatable tetrahedron.</p>



Signals	<p>The table shows the approximate times for the first race.</p> <table><tr><td><i>Signal</i></td><td><i>Spinnaker</i></td><td><i>Non-Spinnaker Racing</i></td><td><i>Non-Spinnaker Cruising</i></td></tr><tr><td>Warning</td><td>1100</td><td>1105</td><td>1110</td></tr><tr><td>Preparatory</td><td>1101</td><td>1106</td><td>1111</td></tr><tr><td>One-minute</td><td>1104</td><td>1109</td><td>1114</td></tr><tr><td>Start</td><td>1105</td><td>1110</td><td>1115</td></tr></table>	<i>Signal</i>	<i>Spinnaker</i>	<i>Non-Spinnaker Racing</i>	<i>Non-Spinnaker Cruising</i>	Warning	1100	1105	1110	Preparatory	1101	1106	1111	One-minute	1104	1109	1114	Start	1105	1110	1115
<i>Signal</i>	<i>Spinnaker</i>	<i>Non-Spinnaker Racing</i>	<i>Non-Spinnaker Cruising</i>																		
Warning	1100	1105	1110																		
Preparatory	1101	1106	1111																		
One-minute	1104	1109	1114																		
Start	1105	1110	1115																		
Courses	<p>Multiple races are planned. Courses will be either drop mark or a combination of government marks and HHSA club marks. The Race Committee will select a course from the HHSA Course Book (available on www.hhsa.org (Racing Page)) and will designate courses by displaying letters and course length (“Long” or “Short”). on boards hung from the starboard side of the signal boat facing away from the starting line The Race Committee may select a different course for each class (e.g., Short course for Non-Spin and Long course for Spin).</p> <p>If a subsequent race is anticipated, the Race Committee will raise Flag “R”. The starting sequence for subsequent races will begin one (1) minute after lowering Code Flag “R”.</p> <p>The Race Committee will not wait for all classes to finish before starting another class. The Race Committee will start additional races for a class after it has finished its previous race.</p>																				
Finish	Between the orange flag on Race Committee Signal Boat (or other designated by the Race Committee) and a nearby mark.																				
Time Limits	In order for a race to qualify, the lead boat in each class must finish within 75 minutes of the start. Each boat must finish within 30 minutes of the first boat in its class or be scored as Time Limit Expired (TLE). This modifies RRS 35.																				
Scoring	Scoring will be Time-on-Time using PHRF ratings and the following formulae: Corrected time = (elapsed time) x (time correction factor) TCF =650 / (550 + PHRF rating)																				
Protests	Any boat intending to file a protest shall inform the Race Committee before departing the race area. Protests must be submitted in writing within 90 minutes of completion of the last race of the day. Protest hearing																				
Awards	1st, 2nd and 3rd finishers for each class. Awards will be presented either at the post-regatta social event, at the HHSA Annual Banquet or mailed to winners. For HHSA boats, the results do not count towards High Point.																				
Social	All participants and guests are invited by HHSA to a post-regatta BBQ, which will be held after the last race, at the Herrington Harbour North “Gedunk” (located near “L” dock) (depending on the COVID situation). HHSA will provide food, water and sodas, but due to club rules, this event is BYOB. Overnight slips at either South or North marinas should be available to participants. Information on slips can be found at																				



HHSA Sailing Instructions 2022

	<p>www.herringtonharbour.com. Please contact Megan Dierks at (410) 867-4343 and let her know you are with the Women's Regatta.</p>
Other	<p>VHF Channel 68 will be monitored and used for courtesy communications from the Race Committee.</p> <p>By participation or entry into an event each boat owner/skipper agrees to abide by the RRS and HHSA Sailing Instructions for the HHSA event in which her boat participates. In consideration of being permitted to enter these events, being knowledgeable of the risks of competition sailing, including but not limited to the risks of Covid-19, and knowing that it is her sole responsibility to decide whether to enter and continue any race, each boat owner/skipper voluntarily assumes the risks of participation in these events and releases HHSA and the people conducting these events from all liability in connection with any injury or damage that may occur.</p>



HHSA Sharps Island Race

Date	Saturday, June 25, 2022																				
Approx. Times	<p>The table shows the approximate times for the race.</p> <table><tr><td><i>Signal</i></td><td><i>Spinnaker</i></td><td><i>Non-Spinnaker Racing</i></td><td><i>Non-Spinnaker Cruising</i></td></tr><tr><td>Warning</td><td>1700</td><td>1705</td><td>1710</td></tr><tr><td>Preparatory</td><td>1701</td><td>1706</td><td>1711</td></tr><tr><td>One-minute</td><td>1704</td><td>1709</td><td>1714</td></tr><tr><td>Start</td><td>1705</td><td>1710</td><td>1715</td></tr></table>	<i>Signal</i>	<i>Spinnaker</i>	<i>Non-Spinnaker Racing</i>	<i>Non-Spinnaker Cruising</i>	Warning	1700	1705	1710	Preparatory	1701	1706	1711	One-minute	1704	1709	1714	Start	1705	1710	1715
<i>Signal</i>	<i>Spinnaker</i>	<i>Non-Spinnaker Racing</i>	<i>Non-Spinnaker Cruising</i>																		
Warning	1700	1705	1710																		
Preparatory	1701	1706	1711																		
One-minute	1704	1709	1714																		
Start	1705	1710	1715																		
Skippers’ Meeting	None. Preregistration on www.hhsa.org is recommended																				
Rendezvous	Race Committee at HHSA A at approx. 1600 hours																				
Start	Between Committee Boat and HHSA A																				
Finish	Between Committee Boat and HHSA A																				
Course	The course shall be course U from the HHSA Course Book. The course version (Long or Short) for each class will be designated by boards displayed on the Committee Boat.																				
Time Qualifications	In order for the race to qualify, the lead boat in each class must finish within six hours of the class start. The Race Committee will stay on station until at least 90 minutes after the last class qualifies. Boats finishing after the Race Committee has left station shall take their own finish times in accordance with HHSA Rules 7.C & 8.B.																				
Protests	The protest time limit is 2 hours after racing has concluded for the day.																				
Awards	Counts towards High Point and Commodore’s Cup.																				
Social	An informal gathering at a local restaurant or location announced by the Race Committee.																				
Other	VHF Channel 68 will be monitored.																				



HHSA Great Bay Race

Date	Sunday, July 24, 2021			
Approx. Times	The table shows the approximate times for the race.			
	<i>Signal</i>	<i>Spinnaker</i>	<i>Non-Spinnaker Racing</i>	<i>Non-Spinnaker Cruising</i>
	Warning	1400	1405	1410
	Preparatory	1401	1406	1411
	One-minute	1404	1409	1414
	Start	1405	1410	1415
Skippers' Meeting	Skippers should register for this race at HHSA.org to assist the Race Committee with planning the start.			
Rendezvous	Race Committee, in vicinity of HHSA A at approx. 1300 hours.			
Start	Between Committee Boat and HHSA A			
Finish	Between Committee Boat and HHSA A			
Course	The course shall be course 'X' from the HHSA Course Book. The course version (Long or Short) for each class will be designated by boards displayed on the Committee Boat.			
Time Qualifications	In order for the race to qualify, the lead boat in each class must finish within six hours of the class start. The Race Committee will stay on station until at least 90 minutes after the last class qualifies. Boats finishing after the Race Committee has left station shall take their own finish times in accordance with HHSA Rules 7.C & 8.B.			
Protests	The protest time limit is 2 hours after racing has concluded for the day.			
Awards	Counts towards High Point and Commodore's Cup. See HHSA Racing Rules for details.			
Social	An informal gathering at a local restaurant or location announced by the Race Committee.			
Other	VHF Channel 68 will be monitored.			



HHSA Shorthanded Race

Date	Saturday, August 6, 2021										
Approx. Times	<p>The table shows the approximate times for the race.</p> <table><thead><tr><th><i>Signal</i></th><th><i>All Boats</i></th></tr></thead><tbody><tr><td>Warning</td><td>1100</td></tr><tr><td>Preparatory</td><td>1101</td></tr><tr><td>One-minute</td><td>1104</td></tr><tr><td>Start</td><td>1105</td></tr></tbody></table> <p>Note: Classes will depend on number of boats signing up for the race.</p>	<i>Signal</i>	<i>All Boats</i>	Warning	1100	Preparatory	1101	One-minute	1104	Start	1105
<i>Signal</i>	<i>All Boats</i>										
Warning	1100										
Preparatory	1101										
One-minute	1104										
Start	1105										
Skippers' Meeting	Skippers should register for this race at HHSA.org to assist the Race Committee with planning the start.										
Rendezvous	Race Committee at HHSA A at approx. 1000 hours										
Start	Between the Committee Boat and nearby mark										
Finish	Between the Committee Boat and HHSA A										
Course	Designated by a sign boards on Committee Boat. The Race Committee shall select a course from the HHSA Course Book.										
Time Qualifications	In order for the race to qualify, the lead boat in each class must finish within 3 hours of the start. Each boat must finish 90 mins. of the first boat or be scored as DNF. This modifies RRS 35.										
Protests	The protest time limit is 2 hours after racing has concluded for the day.										
Awards	Does not count towards High Point. Counts for Commodore's Cup.										
Social	An informal gathering at a local restaurant or location announced by the Race Committee.										
Other	Each participating vessel shall have a maximum of two people on board. Depending on entries, there may be classes for spinnaker, non-spinnaker, and mixed-doubles.										



HHSA Poplar Island Race

Date	Sunday, August 14, 2021																				
Approx. Times	<p>The table shows the approximate times for the race.</p> <table><tr><td><i>Signal</i></td><td><i>Spinnaker</i></td><td><i>Non-Spinnaker Racing</i></td><td><i>Non-Spinnaker Cruising</i></td></tr><tr><td>Warning</td><td>1100</td><td>1105</td><td>1110</td></tr><tr><td>Preparatory</td><td>1101</td><td>1106</td><td>1111</td></tr><tr><td>One-minute</td><td>1104</td><td>1109</td><td>1114</td></tr><tr><td>Start</td><td>1105</td><td>1110</td><td>1115</td></tr></table>	<i>Signal</i>	<i>Spinnaker</i>	<i>Non-Spinnaker Racing</i>	<i>Non-Spinnaker Cruising</i>	Warning	1100	1105	1110	Preparatory	1101	1106	1111	One-minute	1104	1109	1114	Start	1105	1110	1115
<i>Signal</i>	<i>Spinnaker</i>	<i>Non-Spinnaker Racing</i>	<i>Non-Spinnaker Cruising</i>																		
Warning	1100	1105	1110																		
Preparatory	1101	1106	1111																		
One-minute	1104	1109	1114																		
Start	1105	1110	1115																		
Skippers' Meeting	<p>None.</p> <p>Preregistration on www.hhsa.org is recommended.</p>																				
Rendezvous	Race Committee at HHSA A at approx. 1000 hours.																				
Start	Between Committee Boat and HHSA A																				
Finish	Between Committee Boat and HHSA A																				
Course	The course shall be course 'W' from the HHSA Course Book. The course version (Long or Short) for each class will be designated by boards displayed on the Committee Boat.																				
Time Qualifications	In order for the race to qualify, the lead boat in each class must finish within six hours of the class start. The Race Committee will stay on station until at least 90 minutes after the last class qualifies. Boats finishing after the Race Committee has left station shall take their own finish times in accordance with HHSA Rules 7.C & 8.B.																				
Protests	The protest time limit is 2 hours after racing has concluded for the day.																				
Awards	Counts towards High Point and Commodore's Cup. See HHSA Racing Rules for details.																				
Social	An informal gathering at a local restaurant or location announced by the Race Committee.																				
Other	VHF Channel 68 will be monitored.																				



HHSA West River Race

Date	Saturday, August 27, 2021																				
Eligibility	<p>All members of HHSA, PCRC, WRSC and SMSA are invited to participate. There is no fee for entry. Starts will be given for the following classes depending on entries:</p> <ul style="list-style-type: none">• Spinnaker• Non-Spin Racing (boats with an upwind Sail Area-to-Displacement ratio equal to or greater than 21)• Non-Spin Cruising (boats with an upwind Sail Area-to-Displacement ratio less than 21)																				
Approx. Times	<p>The table shows the approximate times for the race.</p> <table><tr><td><i>Signal</i></td><td><i>Non-Spin Cruising</i></td><td><i>Non-Spin Racing</i></td><td><i>Spinnaker</i></td></tr><tr><td>Warning</td><td>1100</td><td>1115</td><td>1130</td></tr><tr><td>Preparatory</td><td>1101</td><td>1116</td><td>1131</td></tr><tr><td>One-minute</td><td>1104</td><td>1119</td><td>1134</td></tr><tr><td>Start</td><td>1105</td><td>1120</td><td>1135</td></tr></table> <p>Note: Depending on entries classes may be combined and scored as a single class; or starts may be combined and scored as separate classes.</p>	<i>Signal</i>	<i>Non-Spin Cruising</i>	<i>Non-Spin Racing</i>	<i>Spinnaker</i>	Warning	1100	1115	1130	Preparatory	1101	1116	1131	One-minute	1104	1119	1134	Start	1105	1120	1135
<i>Signal</i>	<i>Non-Spin Cruising</i>	<i>Non-Spin Racing</i>	<i>Spinnaker</i>																		
Warning	1100	1115	1130																		
Preparatory	1101	1116	1131																		
One-minute	1104	1119	1134																		
Start	1105	1120	1135																		
Class Flags	<p>Spinnaker - "6" Pennant</p> <p>Non-Spinnaker Racing - "5" Pennant</p> <p>Non-Spinnaker Cruising - "white" square or pennant</p> <p>Competitors are not required to display the class flag</p>																				
Radio	Boats should monitor VHF Channel 68 for courtesy communications from the Race Committee.																				
Skippers' Meeting	<p>Skippers meeting may be held at 1900 (7:00) PM, on Thursday, July 25, via Zoom. Skippers should register by going to HHSA.org and register for the race and receive the Zoom login information.</p> <p>Skippers should register for this race at HHSA.org to assist the Race Committee with planning the start.</p>																				
Registration	<p>HHSA entrants should register on the HHSA website. Non-HHSA entrants should submit the following information to the HHSA Rear Commodore Racing via e-mail at racing@hhsa.org:</p> <p>Boat name. Owner/skipper. Boat make and model. Owner club affiliation. PHRF Circular Random ratings. PHRF Upwind Sail Area-to-Displacement ratio. E-mail or phone contact for owner/skipper.</p> <p>An entrant list will be maintained on the HHSA web site racing page.</p>																				



HHSA Sailing Instructions 2022

Rendezvous	Race Committee at HHSA A at approx. 1000 hours
Start	Between Committee Boat and HHSA A
Finish	In Galesville between the RC Flag on the Racing Platform at the end of Pirates Cove pier and the Orange/White marker, PCRC Mark "X"
Course	Leave to port: Can 83A, West River Bell G1, West River G1A In addition, West River Markers 2, 3, 4, 5, and 6 plus the white shoal mark between Markers 3 and 5 shall be passed on the channel side. Approximately 13 nautical miles.
Scoring	Scoring will be Time-on-Time using PHRF Circular Random ratings and the following formulae: Corrected time = (elapsed time) x (time correction factor, TCF) $TCF = 650 / (550 + PHRF \text{ rating})$
Check In	Upon reaching the starting area and prior to the race, boats shall check in with the Race Committee by coming close and hailing. Keep radio usage to a minimum.
Time Qualifications	In order for the race to qualify, the lead boat in each class must finish within six hours of the class start. The Race Committee will stay on station until at least 90 minutes after the last class qualifies. Boats finishing after the Race Committee has left station shall take their own finish times and report their results to the Race Committee on the same day of the event. Boats retiring from the race after starting should notify the Race Committee via Channel 68, or text the HHSA Rear Commodore Racing (Mark Burrows) at 703-568-6948
Protests	The protest time limit is 2 hours after racing has concluded for the day.
Awards	Awards will be presented at the after-race gathering or 2022 HHSA Gala. For HHSA boats, counts towards High Point, and Commodore's Cup. See HHSA Racing Rules for details.
Social	Skippers, crew, and guests are invited to join a post-race gathering in Galesville at a local restaurant to be announced.
Other	Amendments to the Sailing Instructions will be posted no later than Friday August 25 on the HHSA website: hhsa.org .



WEST RIVER RACE SPECIAL INSTRUCTIONS

8.1 Handicaps for Cruising Boats

Cruisers will be assigned provisional PHRF handicaps by the Official Scorer or by the Rear Commodore/Racing after the race based on the PHRF of New England posted ratings.

8.2 Grounding - Rule 42.3(i)

To get clear after grounding, a boat may use force applied by a propulsion engine provided the boat does not gain a significant advantage in the race.



SUPPLEMENTARY COURSE INFORMATION

Location of Selected Marks

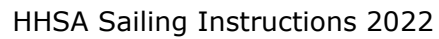
The following table shows approximate positions of HHS and Government marks. The location of PCRC marks is presented further below. A more complete listing can be found on the Racing website and in the HHS Course Book.

Mark	Latitude (N)	Longitude (W)	HHS
Herring Bay 1 (Green)	38° 44.433'	076° 30.838'	W
Herring Bay 2 (Red)	38° 44.526'	076° 32.698'	Y
81A (Green)	38° 43.576'	076° 29.939'	I
83A (Green)	38° 46.134'	076° 29.701'	O
HHS A (Yellow)	38° 44.647'	076° 31.993'	A
HHS B (Yellow)	38° 45.450'	076° 31.650'	B
HHS C (Yellow)	38° 45.500'	076° 30.320'	C
West River 1 (Green)	38° 51.851'	076° 26.999'	Z



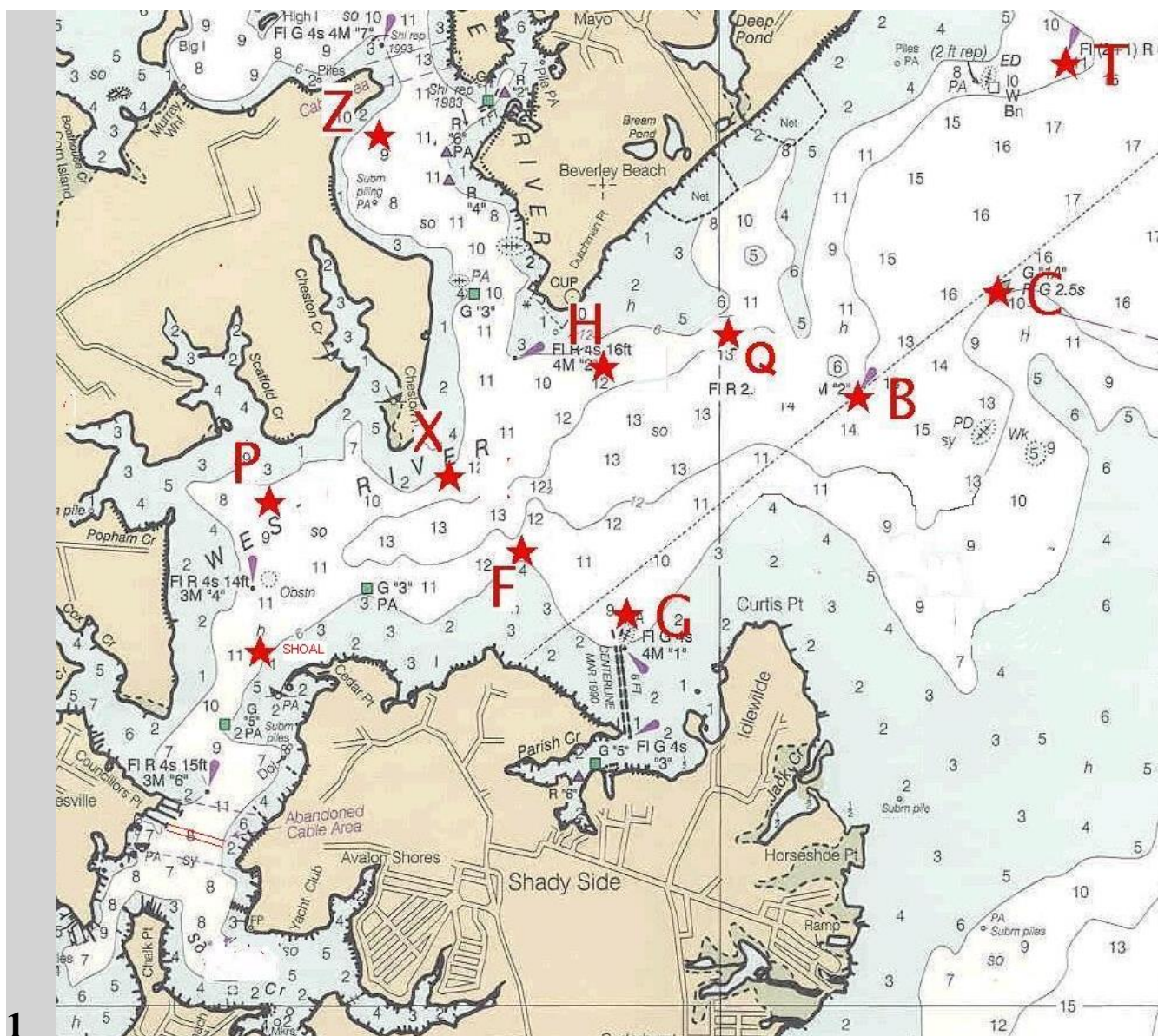
Location of Finish Line for West River Race



[illegible]



PCRC West River Marks



PCRC Mark Locations (Approximate):

S - (Shoal) 38 degrees 51'.0N, 76 degrees 31'.9 W

P - 38 degrees 51'.6N, 76 degrees 31'.9 W

X - 38 degrees 51'.5N, 76 degrees 31'.1 W

F - 38 degrees 51'.4N, 76 degrees 30'.8 W

G - 38 degrees 51'.2N, 76 degrees 30'.5 W



H - 38 degrees 51'.9N, 76 degrees 30'.7 W

Z- 38 degrees 52'.8N, 76 degrees 31'.3 W

Q- 38 degrees 52'.0N, 76 degrees 30'.1 W

GOVERNMENT MARKS:

B (R 2) 38 degrees 51'.94N, 76 degrees 26'.4 W

C (G 1A) 38 degrees 52'.20N, 76 degrees 28'.9 W

T (fl (2+1)R) 38 degrees 53'.00N, 76 degrees 28'.60 W



HHSA Herring Bay Cup

Date	Wednesday, 7 September.																													
Classes	<p>Spinnaker (Spin), NS-Racing (NS-R), NS-Cruising (NS-C), and Multi-Hull (Multi).</p> <p>Flags per standing Wednesday night Sailing Instructions (SIs). The RC will use Pennant 9 to signal the start for the Multi class.</p> <p>Boats must declare the class they sail in at check-in with the Race Committee (RC) as well as the team to which they belong (see Scoring below). Non-racing boats should contact the RC for assistance in determining which class they should sail in.</p> <p>Boats sailing in a Shorthanded Configuration must declare themselves to the RC for safety purposes and will be scored per normal Wednesday night rules, however the results will NOT count towards the season SH results.</p>																													
Starting Times	<table><tr><th>Signal</th><th>Spin</th><th>NS-R</th><th>NS-C</th><th>Multi</th></tr><tr><td>Warning</td><td>1800</td><td>1805</td><td>1810</td><td>1815</td></tr><tr><td>Preparatory</td><td>1801</td><td>1806</td><td>1811</td><td>1816</td></tr><tr><td>One-minute</td><td>1804</td><td>1809</td><td>1814</td><td>1819</td></tr><tr><td>Start</td><td>1805</td><td>1810</td><td>1815</td><td>1820</td></tr></table> <p>The RC will use flags and sounds with courtesy communications on Channel 68; however flag signals shall govern.</p>					Signal	Spin	NS-R	NS-C	Multi	Warning	1800	1805	1810	1815	Preparatory	1801	1806	1811	1816	One-minute	1804	1809	1814	1819	Start	1805	1810	1815	1820
Signal	Spin	NS-R	NS-C	Multi																										
Warning	1800	1805	1810	1815																										
Preparatory	1801	1806	1811	1816																										
One-minute	1804	1809	1814	1819																										
Start	1805	1810	1815	1820																										
Skippers’ Meeting	<p>None.</p> <p>Skippers should register for this race at HHSA.org to assist the Race Committee with planning the start.</p>																													
Rendezvous	<p>In vicinity of the RC flying flag “Lima” at approximately 1730. The RC will be flying the HHSA Burgee and RC flag. The RC will notify all racers of the approximate location via VHF channel 68.</p>																													
Start	<p>Between an orange flag on Committee Boat and an orange tetrahedron drop mark. The RC will ensure an upwind start with a long line for this race to facilitate new racers or boats racing outside their ‘normal’ class.</p>																													



HHSA Sailing Instructions 2022

Course	Designated by sign boards displayed on the Committee Boat. The Race Committee shall select a course from the HHSA Course book. Different versions of the course (Short and Long) may be selected for each class that will allow for races to be completed in approximately 1 hour. The Multi-Hull class shall sail the same course as the NS-C. Only one race will be raced.
Finish	Between the mark designated by the HHSA Course Book (which is a fancy way of saying “HHSA Mark A”, because it’s always “A”) and an orange flag on the Committee Boat
Time Qualifications	<p>For the race to qualify, the lead boat in each class must finish within 2 hours after the starting signal, and each boat must finish before 2030 or be scored DNF. This modifies RRS 35.</p> <p>If any boats remain on the course at 2030, the RC will sound 3 long blasts and announce the expiration of time on VHF Channel 68. This modifies RRS 35.</p>
Protests	The protest time limit is 1 hour after the last boat finishes or the expiration of time, whichever is earlier.
Awards	1 year of Bragging Rights. A perpetual trophy will be presented at the 17 September Beach Party.
VHF Communications	All boats must have a working VHF turned on to channel 68 in order to receive communications from the RC.
Special Instructions	<p>The intent of the Herring Bay Cup is to have a light-hearted end-of-season Wednesday Night race. Skippers are encouraged to try new and different things. Non-traditional racers are encouraged to participate.</p> <p>This is a Team Race. See “Scoring” for additional information on how the teams are constructed and will be scored.</p> <p>Boats may use as many sails as they wish to carry on any downwind leg (True Wind Angle greater than 90 degrees), including double headsails in the NS and Multihull classes. The definition of “Sail” is at the discretion of each skipper, HOWEVER if at least one of the sails meets the criteria to be considered a spinnaker (per 2021 HHSA Racing Rules), they should join the spinnaker class. This modifies the Equipment Rules of Sailing (and about a ½ dozen other Rules). All upwind equipment rules remain unchanged.</p> <p>Boats within the same team are permitted to communicate, coordinate, and help each other during the race via any means available. This modifies RRS 41.</p> <p>At the discretion of the Race Committee, racing may not be conducted if a small craft advisory is in effect, if there is a chance of thunderstorms, or if the true wind speed is over 20 knots. The RC will announce cancellations in advance on VHF Channel 68 and via the Club Express “Racing Discussions”</p>



HHSA Sailing Instructions 2022

	<p>Forum. In all conditions the decision to participate in a race is the responsibility of the Skipper.</p>
Social	<p>Weather and time permitting, a ‘raft up’ in vicinity Eastern Side of the entrance channel to Herrington Harbour South or at Skippers Pier Restaurant, as announced by the RC via Channel 68 and in the online forum.</p>
Scoring	<p>This is a stand-alone Team Race and does not count as part of any series, High Point Trophy, or Commodore’s Cup per HHSA’s 2021 Racing Rules (or anything else for that matter).</p> <p>There will be two teams. Any HHSA boat whose normal mooring is North of Herring Bay G3 will be on the “Upper Chesapeake Bay Team”; likewise all those South of G3 will be on the “Lower Chesapeake Bay Team”. Each team is encouraged to appoint a Team Captain, however this is at their discretion. The race will be conducted as any other Wednesday night race except as modified by these SIs. Each boat and class will be scored based on corrected elapsed times (as normal), except the multi-class will be scored based on elapsed time only. Non-racing monohull boats should contact the RC prior to the race for a courtesy rating.</p> <p>The teams will be scored using a “high point” system; each team will be awarded points based on the finish position of each boat in each class. The team is award 4 points for a 1st place finish, 3 points for a 2nd place finish, 2 points for a 3rd place finish, and 1 point for each additional boat that finishes (it is therefore mathematically possible for a team to win the Herring Bay Cup simply by having more boats finish the race... so start recruiting).</p> <p>The Race Committee will man the finish line in style. Therefore, they may award an additional highly subjective ½ point for any boat that “crosses the finish line in style.” “In style” definition is at the discretion of the Skipper/crew, however it should be obvious to the RC. The opinion of the RC is final and not subject to protest or redress for this ½ point.</p> <p>A team may receive an additional ½ point for any Member that posts a picture of their pet on their boat on an HHSA Facebook post that will be started explicitly for this purpose on the day of the race. In order to count for points, all posts must be made before the last boat finishes. The post will include the instructions for how to post the photo. Important note (and team scoring tip): an HHSA Member doesn’t have to race... or even be on their boat... on Wednesday night to earn this ½ point for their team.</p> <p>A tie will be broken by the team that has the most (of 3 possible) 1st Place Finishes in the classes with corrected times (so excluding the multi-hull</p>



HHSA Sailing Instructions 2022

	class...sorry... wanted an odd number and we aren't going to correct your times, and the RC doesn't want to argue about it all night if it's that close).
--	-----------------------------------------------------------------------------------------------------------------------------------------------------------



HHSA Regatta

Date	Sunday, September 18, 2022																				
Approx. Times	<p>The table shows the approximate times for the first race, with spinnaker boats starting first.</p> <table><tr><td><i>Signal</i></td><td><i>Spinnaker</i></td><td><i>Non-Spinnaker Racing</i></td><td><i>Non-Spinnaker Cruising</i></td></tr><tr><td>Warning</td><td>1100</td><td>1105</td><td>1110</td></tr><tr><td>Preparatory</td><td>1101</td><td>1106</td><td>1111</td></tr><tr><td>One-minute</td><td>1104</td><td>1109</td><td>1114</td></tr><tr><td>Start</td><td>1105</td><td>1110</td><td>1115</td></tr></table>	<i>Signal</i>	<i>Spinnaker</i>	<i>Non-Spinnaker Racing</i>	<i>Non-Spinnaker Cruising</i>	Warning	1100	1105	1110	Preparatory	1101	1106	1111	One-minute	1104	1109	1114	Start	1105	1110	1115
<i>Signal</i>	<i>Spinnaker</i>	<i>Non-Spinnaker Racing</i>	<i>Non-Spinnaker Cruising</i>																		
Warning	1100	1105	1110																		
Preparatory	1101	1106	1111																		
One-minute	1104	1109	1114																		
Start	1105	1110	1115																		
Skippers' Meeting	<p>None.</p> <p>Skippers should register for this race at HHSA.org to assist the Race Committee with planning the start.</p>																				
Rendezvous	Race Committee in vicinity of HHSA A at approx. 1000 hours																				
Start	Between Committee Boat and nearby drop mark																				
Finish	Between Committee Boat and designated mark																				
Course	The courses sailed will be identified by sign boards on the committee boat, and will be either “2”, “3” or “4” as shown on Page 16 of the Course Book.																				
Scoring	PHRF windward/leeward ratings will be used for this regatta.																				
Time Qualifications	<p>In order for a race to qualify, the lead boat in each class must finish within 75 minutes after the starting signal.</p> <p>Each boat must finish within 30 minutes after the lead boat in her class or be scored as DNF. This modifies RRS 35.</p>																				
Protests	The protest time limit is 2 hours after racing has concluded for the day.																				
Awards	Counts towards High Point and Commodore’s Cup. Awards given out per Series. See HHSA Racing Rules for details.																				
Social	An informal gathering at a local restaurant or location announced by the Race Committee.																				
Other	<p>VHF Channel 68 will be monitored.</p> <p>Multiple races are planned. If a subsequent race is anticipated, the Race Committee will announce its intentions as boats finish the preceding race, and may fly Flag R. If Flag R is raised, it will be lowered with one sound one minute before the Warning signal for the subsequent race.</p>																				



HHSA Autumn Classic Race

Date	Sunday, October 2, 2021
Approx. Times	The table shows the approximate times for the race.
	<i>Signal</i> <i>Spinnaker</i> <i>Non-Spinnaker</i> <i>Non-Spinnaker</i>
	Warning 1100 1105 1110
	Preparatory 1101 1106 1111
	One-minute 1104 1109 1114
	Start 1105 1110 1115
Skippers’ Meeting	None.
	Preregistration on www.hhsa.org is recommended.
Rendezvous	Race Committee at HHSA A at approx. 1000 hours
Start	Between Committee Boat and nearby mark
Finish	Between Committee Boat and HHSA A
Course	The Race Committee shall select a course from the HHSA Course Book. The course version (Long or Short) for each class will be designated by boards displayed on the Committee Boat.
Time Qualifications	In order for the race to qualify, the lead boat in each class must finish by 1400 hours. Each boat must finish by 1530 hours or be scored as DNF. This modifies RRS 35.
Protests	The protest time limit is 2 hours after racing has concluded for the day.
Awards	Counts towards High Point and Commodore’s Cup. See HHSA Racing Rules for details.
Social	An informal gathering at a local restaurant or location announced by the Race Committee.
Other	VHF Channel 68 will be monitored.



HHSA Frostbite Series (6 multi-race Days)

Dates	Sundays Oct 30, Nov 6, Nov 13, Nov 20, Nov 27, Dec 4															
Approx. Times for 1 st Race	<table><tr><td><i>Signal</i></td><td><i>Sound</i></td><td><i>All Boats</i></td></tr><tr><td>Warning</td><td>(●)</td><td>1200</td></tr><tr><td>Preparatory</td><td>(●)</td><td>1201</td></tr><tr><td>One-minute</td><td>(—)</td><td>1204</td></tr><tr><td>Start</td><td>(●)</td><td>1205</td></tr></table>	<i>Signal</i>	<i>Sound</i>	<i>All Boats</i>	Warning	(●)	1200	Preparatory	(●)	1201	One-minute	(—)	1204	Start	(●)	1205
	<i>Signal</i>	<i>Sound</i>	<i>All Boats</i>													
	Warning	(●)	1200													
	Preparatory	(●)	1201													
	One-minute	(—)	1204													
	Start	(●)	1205													
The table shows the approximate times for the first race. Multiple races may be sailed. The starting sequence for subsequent races will begin as soon as practical after all boats have finished the previous race. The class flag shall be a “5” Flag.																
Skippers’ Meeting	None. Preregistration on www.hhsa.org is recommended.															
Rendezvous	Race Committee at HHSA A or its vicinity at approx. 1130															
Start	Between Committee Boat and drop mark or other nearby mark															
Finish	Between Committee Boat and nearby mark															
Course [⌘]	Designated by sign boards displayed on the Committee Boat. The Race Committee shall select Frostbite Course A, B, or C from the HHSA Course book, and will select courses that will allow for races to be completed in approximately 1 hour.															
Time Qualifications	In order for the first race to qualify, the lead boat in must finish within 90 minutes after the starting signal, and each boat must finish within 45 minutes of the first boat or be scored as DNF. There is no time limit for subsequent races. No race will be started after 1430. The Race Committee will announce DNF for boats still on the course on VHF Channel 68. This modifies RRS 35.															
Protests	The protest time limit is 2 hours after racing has concluded for the day.															
Awards	Does not count towards the season High Point, but does count for Commodore’s Cup. Awards given out for the Series. See HHSA Racing Rules for details.															



HHSA Sailing Instructions 2022

Special Instructions	<p>Races are for non-spinnaker boats. Double headsails are not permitted. Whisker poles are not permitted.</p> <p>After a boat has started, crew members wearing PFD's are allowed out of the cockpit only to sit on the rail or during a tack or a gybe to assist moving the headsail around the mast and standing rigging and skirt the headsail. Crewmembers shall not be standing outside the cockpit at any time except briefly to perform a necessary task.</p> <p>Headsail changes after a boat has started are not permitted. Reefing or un-reefing the mainsail after a boat has started is not permitted. Rolling/unrolling a roller furling headsail is permitted.</p> <p>At the discretion of the Race Committee, racing may not be conducted if there is heavy ice in either of the marinas or if the true wind speed is over 20 knots. The RC is encouraged to announce cancellations in advance on VHF Channel 68.</p> <p>Participating boats shall comply with PHRF of the Chesapeake Category 4 Special Safety Regulations.</p>
Social	An informal gathering at a local restaurant after the race.



Appendix A - SPECIAL INSTRUCTIONS FOR DROP-IN RACERS

Handicaps for Cruiser Racing

HHSRA Members who participate in one (1) race (Cruisers) will be assigned provisional PHRF handicaps at the skippers' meeting or by the Rear Commodore/Racing unless a skipper can show a valid PHRF certificate.

Course Information

The day's race course will be selected from the HHSRA Course Book, copies of which are available for download from the HHSRA Racing website and upon request from the Rear Commodore/Racing.

The following table shows approximate positions of marks that are most often used in setting courses. A more complete listing can be found on the Racing website and in the HHSRA Course Book.

Mark	Latitude (N)	Longitude (W)	HHSRA
Herring Bay 1 (Green)	38° 44.433'	076° 30.838'	W
Herring Bay 2 (Red)	38° 44.526'	076° 32.698'	Y
81A (Green)	38° 43.576'	076° 29.939'	I
83A (Green)	38° 46.134'	076° 29.701'	O
HHSRA A (Yellow)	38° 44.647'	076° 31.993'	A
HHSRA B (Yellow)	38° 45.450'	076° 31.650'	B
HHSRA C (Yellow)	38° 45.500'	076° 30.320'	C
HHSRA Inflated Tetrahedron	Variable	Variable	U
HHSRA Inflated Cylinder	Variable	Variable	G

Racing Rules for Cruisers

Upon reaching the starting area and prior to the race, boats shall check in with the Race Committee by coming close and hailing. Note the race course marks displayed on sign boards on the committee boat lifelines on the side away from the starting line. Keep radio usage to a minimum, but monitor **VHF Channel 68** before and during the race.



Example Starting Sequence

<i>Signal</i>	<i>Flag & Sound</i>	<i>VHF</i>	<i>Example time race</i>
	'L' lowered, multiple short horn blasts		10:54
Warning	Class flag(s) raised; 1 horn blast	"5, 4, 3, 2, "	10:55
Preparatory	'P' raised; 1 horn blast	"Racers Prep"	10:56
One-minute	'P' lowered; 1 long horn blast	"5, 4, 3, 2, "	10:59
Starting	Class flag(s) lowered; 1 sound, next class flag raised	"5, 4, 3, 2, all clear"	11:00
Preparatory	'P' raised; 1 horn blast	"Cruiser Prep"	11:01
One-Minute	'P' lowered; 1 long horn blast	"5, 4, 3, 2, all clear"	11:04
Starting	Class flag lowered, 1 sound*	"5, 4, 3, 2, all clear"	11:05

* sound may be a horn blast or cannon fire

A boat must pass across the line between the committee boat's mast and the starting mark (inflatable mark or fixed mark such as HHS A) heading in the direction of the first mark of the course, as soon after the starting signal as possible.

Similarly at the finish, a boat must cross the line between the committee boat's mast and the finishing mark in the direction from the preceding mark of the course. The Race Committee will indicate a finish with a sound signal (horn or cannon).



Basic Right Of Way Rules

On opposite tacks, a boat on port tack (boom on starboard side of boat centerline) shall keep clear of a boat on starboard tack (boom on port side of boat centerline). It doesn't matter which side any head sail is on.

Note, the boats may not be sailing in the same direction, i.e., a port tack boat sailing upwind must yield to a starboard tack boat sailing downwind, and vice versa.

Note, downwind it is very easy to change tacks by simply switching the main from one side to the other.

On the same tack, overlapped (any portion of the following boat ahead of an imaginary line perpendicular to the leading boats transom), the boat to windward shall keep clear of the leeward boat:

Sailing downwind, leeward is defined as the side the boom is on, so two boats sailing dead downwind with booms on their port side (both on starboard tack), the boat to port would be the leeward boat and the boat to starboard must keep clear. Overlaps are often hard to judge. If there is doubt, assume one exists.

On the same tack, not overlapped, the boat clear astern shall keep clear of the boat clear ahead. Once an overlap is established then windward/leeward applies.

There is usually little to be gained sailing adjacent to another boat, so when given a choice, pass either three or more boats lengths to windward or leeward of another boat.

Always allow the give way boat room and time to respond. Hail the give way boat to give way.

Avoid collisions regardless of who has right-of-way.

Be especially careful at the start and rounding marks as this is where there are typically several boats sailing in close proximity.

All participants, racers and cruisers, are encouraged to fly the HHSA burgee, so that participants can be readily identified on the course.



2 Appendix B - SPECIAL INSTRUCTIONS FOR A RABBIT START

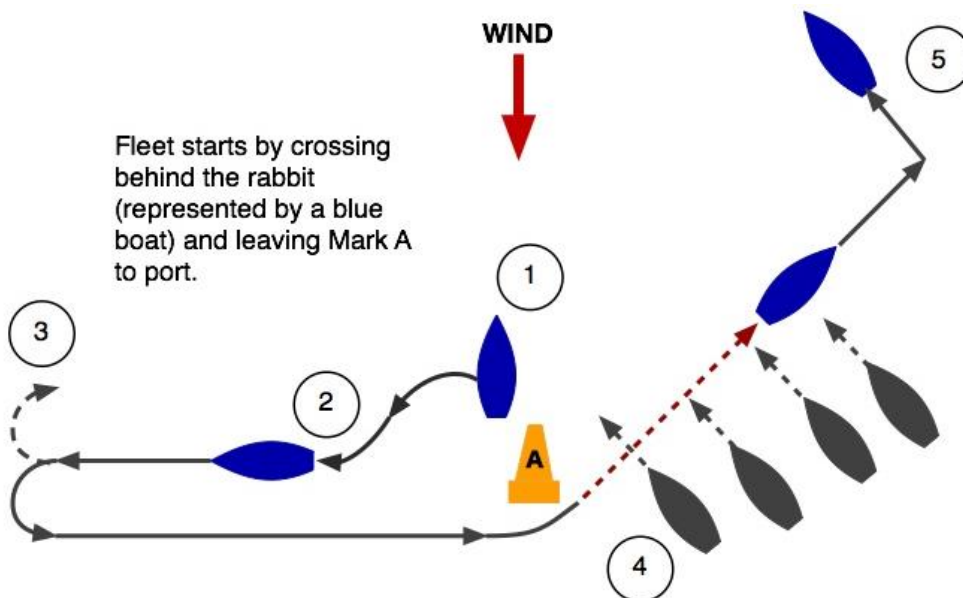
1. In the absence of an on-station Race Committee, the following replaces sections of the Sailing Instructions.
2. If the “Rabbit” has not been designated prior to the race, the “Rabbit” shall be a boat chosen among boats which are present at the rendezvous location. The "Rabbit" shall display the HHSA burgee on its backstay for identification.
3. There will be only one start for all boats, and it will be a “Rabbit Start”. The Rabbit Start is used to start a race to Windward in the absence of a Committee Boat. The Rabbit shall announce the course (Long or Short) for each class, and each class will be scored separately. The Rabbit shall serve as the check in boat and signal boat. All signals will be horn and/or radio. No visual signals will be used.
4. At approximately the time published in the Sailing Instructions (SI's) for the Warning Signal, the Rabbit will pass the starting mark on a starboard course. The Rabbit shall proceed a distance to allow returning to the starting mark and heading off close hauled on port tack at approximately the start time published in the SIs. All boats must leave the starting mark to port and pass behind the Rabbit on starboard tack in order to start, as described in more detail below. The Rabbit shall record the time her transom passes the starting mark as the official race start time.

Position	Signal	Approx. Time	Sound	Rabbit's Actions
1	Warning	Time as published in SI's	1 sound	Pass in the immediate vicinity of the starting mark on a starboard tack beam reach which she maintains for about 2 minutes.
2		~+3 mins.		Tack or jibe; return to the starting mark on port tack beam reach
3	Start	~+5 mins.	1 sound	Pass the starting mark to port, sailing close hauled. Record the start time.
4	End of starting sequence	~+ 6 mins.		The Rabbit may tack to starboard at any time after all boats have crossed her stern, or after the Rabbit has crossed the bows of



				all boats, or any time later than 90 seconds after passing the starting mark.
--	--	--	--	-------------------------------------------------------------------------------

5. The diagram below shows the sequence in a visual format



6. The starting line is the line between the port-end starting mark and the Rabbit's transom. A boat starts when it crosses the starting line while the Rabbit is on port tack. After starting, all boats shall remain on starboard tack until the Rabbit has tacked to starboard. A boat failing to start properly may do so by sailing to the approximate location the Rabbit tacked to starboard and make a turn – one tack and one gybe.
7. All times are approximate. The absence of a sound signal shall be disregarded. This modifies RRS 26.
8. Boats shall take their own finish times in accordance with HHSA Racing Rules Section 8.B and 8.C and announce the time over VHF Channel 68 until acknowledged by the Rear Commodore (Racing) or another competitor. This modifies rule 8.B.
9. Finishing boats shall stay in the vicinity of the finish line until the boat behind them has finished and announced a finish time. The last boat to finish shall disregard this requirement.